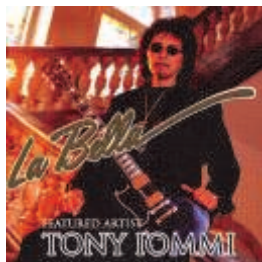


## Electric Guitars

*La Bella*

### ELEKTRISK GITAR

ELECTRICS. Ekstra 1. og 2. streng.



EL-EX Ex. Light	009-011-016-024W-030W-042W	120
EL-R Regular	010-013-017-026W-036W-046W	120
EL-BL Blues	011-014-018-028W-038W-050W	120
EL-7 SL (7-str. EL)	009-011-014-022W-030W-038W-053W	150

### FLATWOUND

20PL Light	011-015-020W-028-039-052	250
20PM Medium	013-017-023W-031-042-053	250
20PH Heavy	015-019-025W-033-044-056	250
20P-12 12 str.	011,014,020w,028,039,052	370
	011,014,009p,014p,019p,028w	

### BLACK NYLON Wound/Spunnet – Nylonbelagt

800 M (6-str.)	014-018-036-046-056-067	250
800-7 (7-str.)	014-018-036-046-056-067-100	399

### DROP TUNE SERIE

DT13	013-017-028w-038w-048w-060	145
------	----------------------------	-----

HRS-D1	010-013-026w-036w-052w-64w Hard Rockin' Steel	160
HRS-D4	013-017-026w-042w-054w-70w Hard Rockin' Steel	160

### BARITONE ELECTRIC GUITAR

BGE-L	014-018-028w-040w-050w-070w	165
BGE-M	015-019-030w-044w-056w-080w	165
BGE-12	BGE-M+015-019-015-020-028-040w	275



## Classical Guitars

*La Bella*

### KLASSISK GITAR



2001 LT	Classic – low tension	175
2001 MT	Classic – medium tension	175
2001 MH	Classic – medium/high tension	175
2001 XHT	Classic – extra high tension	175
2001F-MT	Flamenco – medium tension	175
2001F-HT	Flamenco – high tension	175



427	Elite Pacesetter. Et av verdens mest solgte sett.	145
830	Folksinger. Svarte trebles. Bass end.	150
850	Gold nylon trebles. Golden alloy basses.	150
900	Golden Superior. Polished basses.	160



AR	ARGENTO PURE SILVER HAND POLISHED	750
AM / AH	Argento Pure Silver. Medium or hard tension.	650
ASPM / ASPMH / ASPH	Argento, Extra fine silver plating. M, MH or H tension.	299

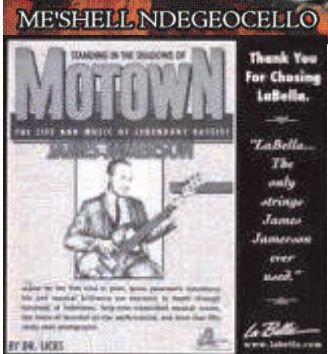
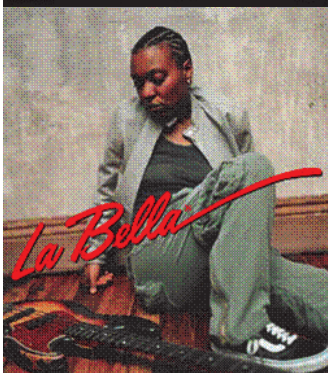
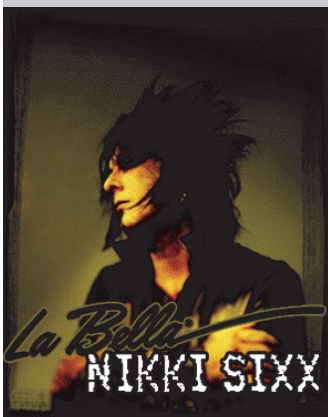
10PH	Pro. High tension silver. 65,6-66,4cm scale.	175
413P STUDIO	Pro. Polished wound basses. "Noise free."	340
500P RECORDING	Pro. High tension. Smooth wound basses. HT	340
411	Pro. Antique. Diskant av tarm. Silver plated basses. HT	440

### STRENGER FOR BARNEGITARER / KORTSKALA KLASSISK.

114	1/4 - størrelse student gitar – 44/45 cm	140
112	1/2 - størrelse student gitar – 52/53 cm	140
134	3/4 - størrelse student gitar – 57/58 cm	140
178	7/8 - størrelse student gitar – 62/63 cm	140



# Electric Bass Guitars



## ELEKTRISK BASS

### HARD ROCKIN' STEEL

M42	040-060-075-095	470
M45	045-065-085-105	470
M42B	040-060-075-095-128. 5 string.	630
M45B	045-065-085-105-128. 5 string.	630

### DEEP TALKIN' BASS

760 RL Light	041-058-083-106. Round wound.	470
760RM Medium	044-051-085-110. Round wound.	470
760QM	046-064-085-110. Quarter round.	750

### POLISHED / FLATWOUND :

0760M Flat, Rustfri	052-073-095-110 - " Original Fender 1954. Jamerson."	750
760FM Flat, Rustfri	059-069-089-109-128 – (Nikkelfritt)	750
760FL-B Light	043-060-082-104-128. Flatwound. 5 string.	965
760FS-B Standard	045-065-085-105-128. Flatwound. 5 string.	965

### BLACK NYLON

### Tape wound

760N	060-070-094-115. 4 string.	799
760N-B	060-070-094-115-128. 5 string.	1030
760N-CB	043-060-070-094-115-135. 6 string.	1230

### SLAPPERS

SN42	040-060-080-100	470
SN45	045-065-085-105	470
SN42-B	040-060-080-100-128. 5 string.	640
SN45-B	045-065-085-108-128. 5 string.	640
SN-N128	Løs 5. streng for "Slappers"	170

### SUPER STEPS

SS40	040-060-075-095	740
SS42	040-060-080-100	740
SS45	045-065-085-105	740
SS50	050-070-085-105	740
SS60	050-070-085-110	740
SS40B	040-060-075-095-118. 5 string.	1050
SS45B	045-065-085-105-128. 5 string.	1050
SS45CB	SS45+ high "C", extra long. 6 string.	1120

### DROP TUNE SERIES

DT54	054-075-090-111	470
------	-----------------	-----

### DIVERSE

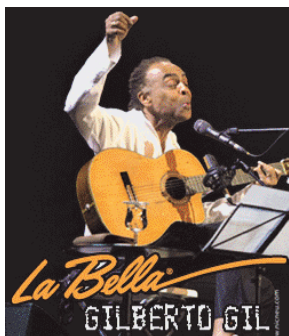
767-6F	Fender bass VI, 026-095. Flat wound.	1080
767-6S	Fender bass VI, 026-095. Round wound stainless.	810
760FHBB	Beatle bass. Flat wound 050-100.	740
760FHB2	Beatle bass. Flat wound 039-100.	740

### AKUSTISK BASS

ABN10	040-060-075-080. Brass on steel. EL/AC.	615
ABN20	045-065-080-100. Brass on steel. EL/AC.	615
ABN30	040-060-065-088. Brass on nylon.	495
ABN70BB Piccolo.	022-032-035-050. Brass on nylon.	495

## AKUSTISK GITAR

## LABELLA PHOSPHOR BRONZE



7GPT	Ex.light	010-014-020W-028-038-050	150
7GP	Cust.light	011-014-022W-030-036-050	150
7GPS	Light	012-016-022W-031-041-052	150
7GPM	Medium	013-017-026W-035-046-056	150

## GYPSY SERIES

BG-M	011-014-023w-031w-041w-051w	190
BG-12	012-016-025w-033w-046w-056w	190

## BARITONE

BG-L	014-018-028w-040w-050w-070w	170
BG-M	015-019-030w-044w-056w-080w	170
BG-12	BGE-M+015-019-015-020-028-040w	285

## VALUE LINE

## "CRITERION"

Alle sett med Criterion har ekstra 1. og 2. streng.

Elektrisk gitar		Ekstra 1. og 2. streng.	
C200T	Light	009-011-016P-024W-032-042	89
C200R	Medium	010-013-017P-025W-036-046	89

## Phosphor bronze, Akustisk. Ekstra 1. og 2. streng.

C520T	Ex-light	010-014-020W-028-038-050	95
C520S	Light	012-016-022W-031-041-052	95
C520M	Medium	013-017-026W-035-046-056	95

## Klassisk gitar.

C-750	Clear nylon – "Golden alloy". Gode "skolestrenger". (Økonomisk kvalitet).	89
-------	---	----

## Elektrisk bass

C900L	40-60-75-95	325
C900S	45-65-85-105	325

## Orchestral Instruments

## STRYKEINSTRUMENTER

## FIOLIN

680	4/4. Metall.	180
630	4/4. Metal.	355

## CELLO

650	Cello, Full core.	795
-----	-------------------	-----

## KONTRABASS

1006	Nylon wound (Supernil) / nylon core	1950
RC610	Chrome Steel Flat wound / rope core	1550
1213.610	Chrome steel flat wound / full core	1420
7710	Black Nylon tape wound / rope core	3490
7720-L	Chrome steel flat wound / rope core. Solo sett.	3490
7720-M	Chrome steel flat wound / rope core	3490
980	"GUT" Tarmstrenger	5030

